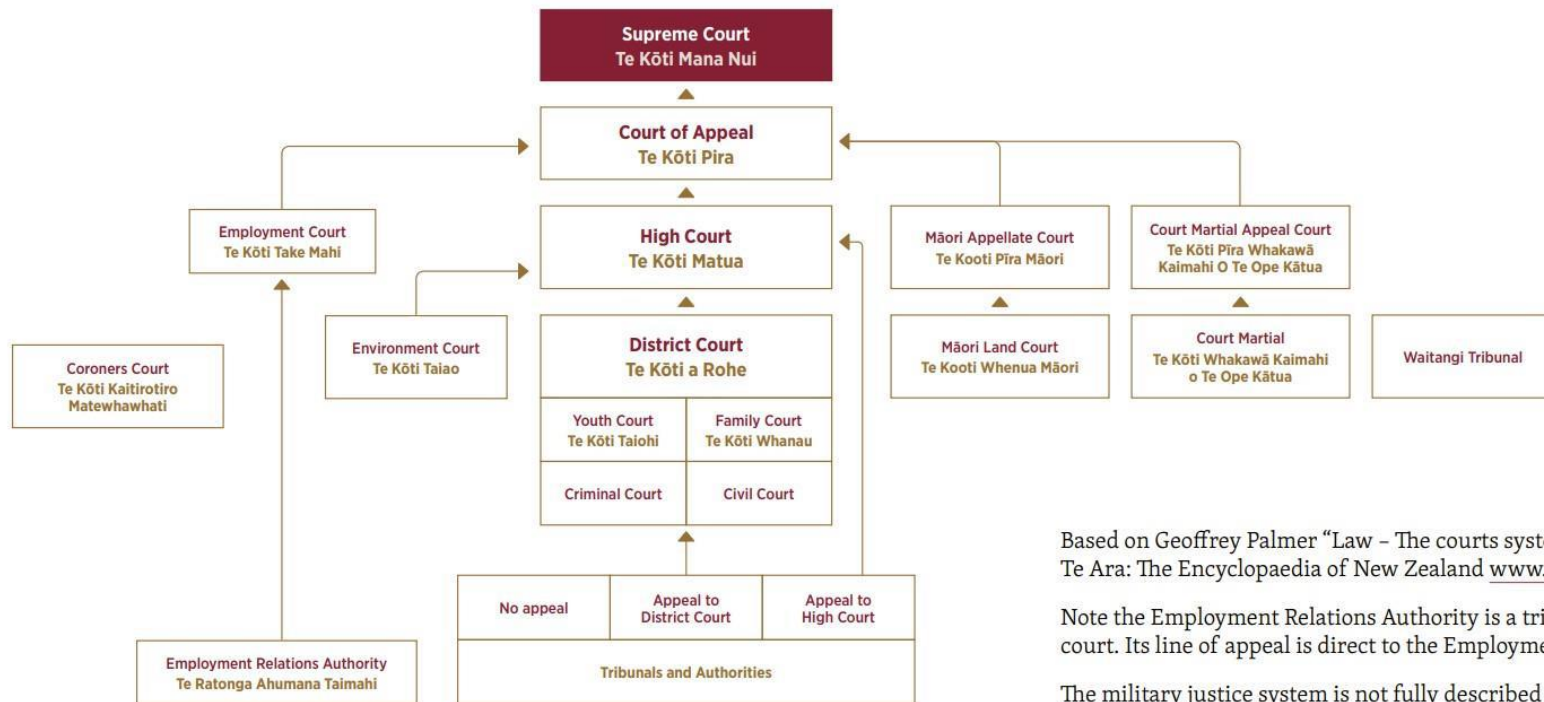


New Zealand's court system

In our democracy the role of the courts is to administer justice. There are many aspects to this work – enforcing the criminal law, resolving civil disputes amongst citizens, upholding the rights of the individual and ensuring that government agencies stay within the law.

In New Zealand, there are a range of trial, appellate, and specialist courts. The hierarchy of these courts is illustrated in the diagram below.



Based on Geoffrey Palmer “Law - The courts system”
Te Ara: The Encyclopaedia of New Zealand www.teara.govt.nz

Note the Employment Relations Authority is a tribunal not a court. Its line of appeal is direct to the Employment Court.

The military justice system is not fully described here.